

# 2020-2021 Aldea Impact Report



**The essential community  
partner for children and  
families in crisis.**



# LETTER FROM THE CEO

Dear Friends,

Our second year of the pandemic has brought challenges and triumphs.

In our treatment foster care program, hundreds of children a year have a safe foster home through Aldea because of you, where they can begin to heal after suffering abuse in their birth homes. We provide hope and healing to thousands of people that we serve in our mental health programs. But we could never do it without strong community support. With the commitment of Aldea's staff, board, donors, volunteers, supporters, and advocates, we get closer each day to building a community that works for everyone; where people have their needs met so they can actively participate and contribute to this dynamic place we call home. The community is instrumental in Aldea's ability to meet its mission for years to come. Together, we are building a community that works for everyone!

Sincerely,

Kerry Ahearn  
Chief Executive Officer



"Children are one third of  
our population and all of  
our future."

Select Panel for the  
Promotion of Child  
Health, 1981



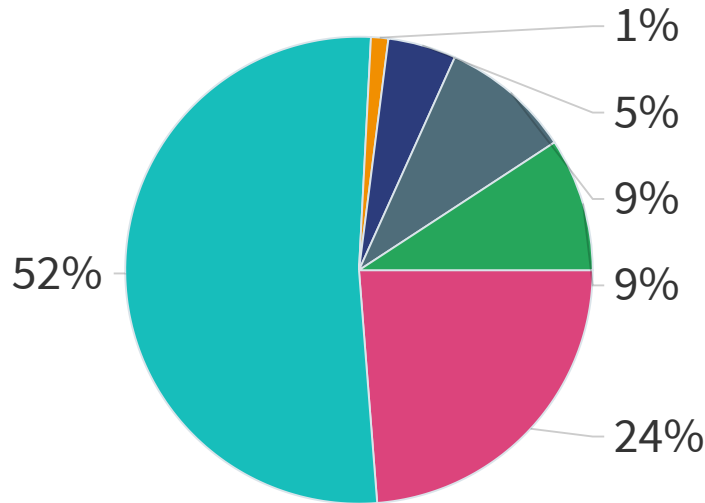
# Aldea's mission and vision

**Our mission** is to improve lives and create bright futures for people we serve by providing professional mental health, child welfare and support services in a manner that respects the dignity and individuality of each person.

**Belief Message** Aldea is the essential community partner for children and families in crisis. We believe that in a family's most critical moments, the company of a trusted professional can mean the difference between strength and suffering. Every day, our expert staff walks with young people on their journey to healing, providing the care that brings both short-term comfort and long-term resilience. Because with a community of support, they discover their own ability to create a new life, one moment at a time.



# 2020 - 2021 Revenue

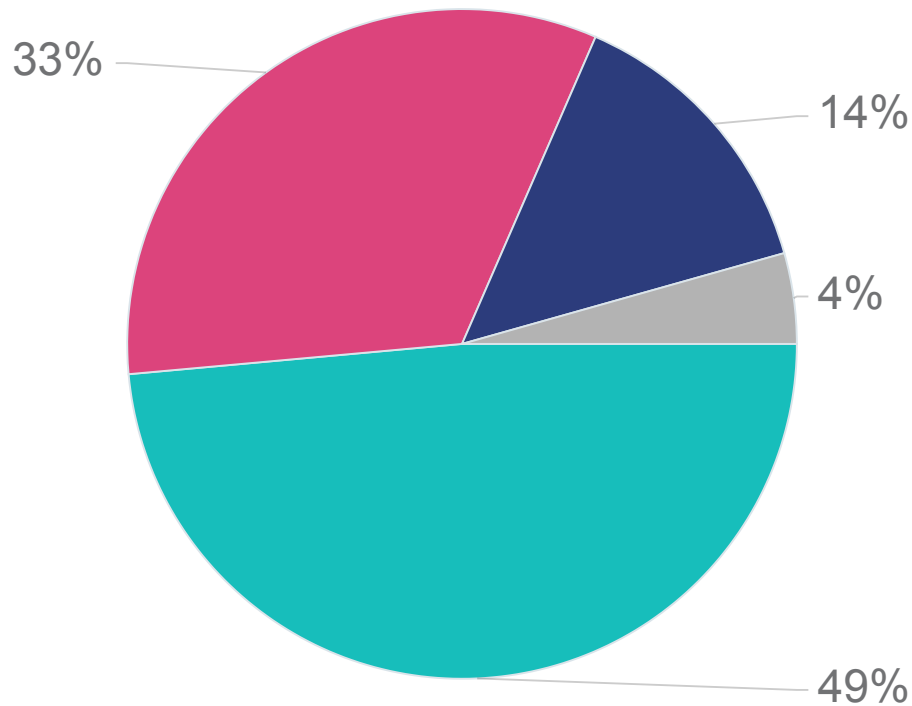


Fee For Service	2,394,920
State,County, City contracts	5,248,340
Investment Income	120,474
School and school district contracts	474,973
Private Fundraising and other sources	912,078
PPP Forgiveness	930,000

**Where the money  
comes from -  
(In Millions)**

Fee For Service	24%
State, County, City Contracts	52%
Investment Income	1%
School and school district contracts	5%
Private fundraising and other sources	9%
PPP Forgiveness	9%
<b>TOTAL</b>	<b>\$10.1 100%</b>

# 2020 - 2021 Expenses



Behavioral and Mental Health Services	4,695,612
Social Services	3,188,441
Administration	1,363,202
Fundraising and Marketing	422,763

## Where the money goes- (In Millions)

Behavioral and Mental Health Services	49%
Social Services	33%
Administrative	14%
Fundraising and Marketing	4%
<hr/>	
TOTAL	\$9.2 100%



# Aldea's Impact in the community

Average  
placement move  
for Aldea is 1



**25% of California  
foster you experience  
an average of 5  
moves.**



# 2020-2021 Fiscal year highlights



## September 2021 Aldea launches new rebrand and messaging



September 22, 2021 The Elizabeth Morgan Brown Center and ASPIRE Clinic run by Aldea opens in Sonoma County



October 2020 Julie Burns is promoted to Chief Program Officer



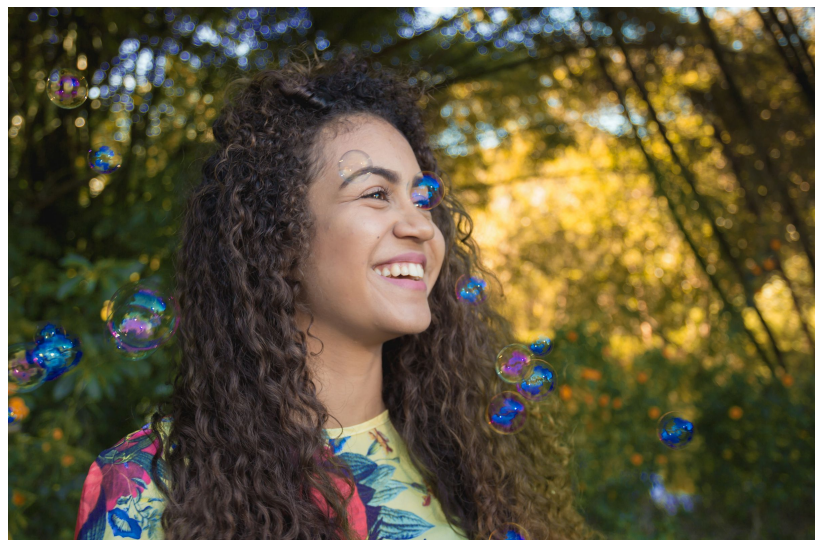
## May 2021 Aldea holds first virtual fundraiser to success



## June 2021 Aldea hold first community fair

# ALDEA SERVICES

- **Counseling**, therapy, and psychiatry  
for children, adults and families
- **Day treatment** services in high school setting
- **Housing** and support for youth  
transitioning out of foster care
- **Suicide Prevention** and Awareness  
education and training to teach people how  
to recognize and respond to signs of mental illness
- **Foster care and adoption** services for kids  
with mental health and behavioral health issues
- **Substance abuse prevention and treatment**  
for youth





# Thank You to Our Donors

Adventist Health St. Helena  
American Canyon Chiropractic  
American Foundation  
for Suicide Prevention  
AVMS  
Bank of Marin  
Blue Note Napa  
Community Projects, Inc.  
Coombs & Dunlap, LLP  
Eric D. Ewig Physical Therapy Inc.  
First Christian Church of Fairfield-Suisun  
Fontanella Family Winery  
Hersly Wines  
Kiwanis Club of Napa Foundation  
KVON/KVYN  
Lagunitas Brewing Company  
Long Electric Company  
Napa Valley Community Foundation  
Napa Valley Exposition  
Napa Valley Vintners

Northern California Chapter NECA  
Nova Group, Inc  
Partnership HealthPlan of CA  
Rabobank Napa  
Shea Family Charitable Lead Trust  
Sonoma Harvest  
Soroptimist International of Vacaville  
St. Joseph Health Queen of the Valley  
Strength Meets Strength  
Family Foundation  
The Doctor's Company  
Ticket to Dream Foundation  
Tito Fuentes Baseball Academy  
Trade Brewing  
Vintners Accounting Services  
WestAmerica Bank

